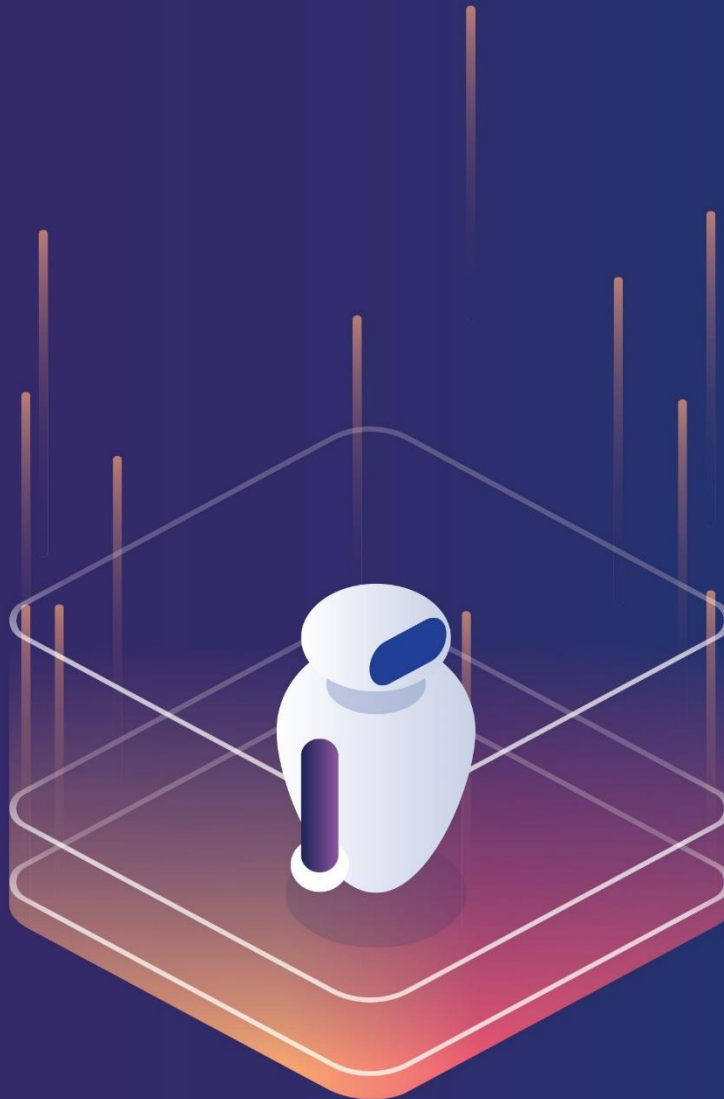




# AKABOT AGENT USER GUIDE



# CONTENT



I. Introduction .....	3
II. User Guide .....	3
2.1 Configure network setting.....	4
2.2 Configure bot setting & connect to Bot Center.....	5
2.3 Get processes from Bot Center or Bot Studio.....	6
2.4 Control the processes .....	6
a. Pull new version of a package.....	7
b. Start a process.....	8
c. Stop a process.....	9

# I. INTRODUCTION

AkaBot Agent is one of 3 components of AkaBot suite.

The Bot Agent is an Aka execution agent that enables you to run processes built in Bot Studio or deployed from AkaBot Center.

This document aims to guide you how to use the AkaBot Agent.

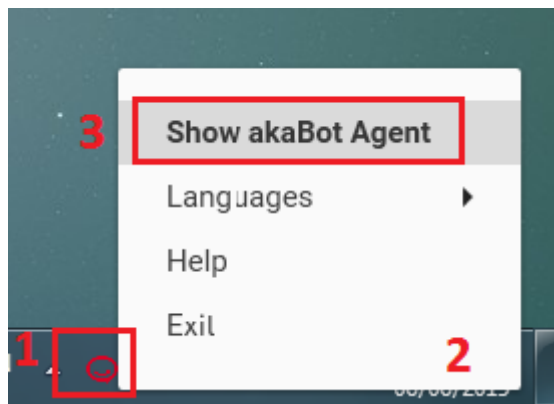
# II. USER GUIDE

To operate a bot, you need to follow below actions:

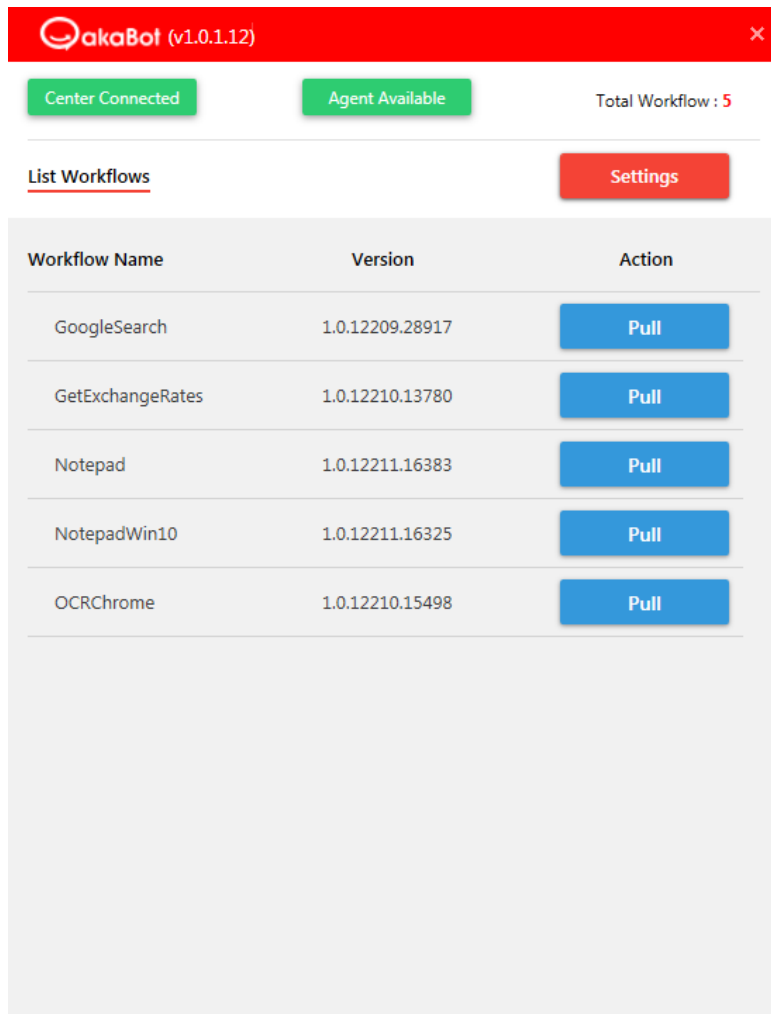
- 1 Configure network setting to open connection to the Bot Center if needed.
- 2 Configure bot setting & connect to Bot Center.
- 3 Get processes from Bot Center or Bot Studio.
- 4 Control the processes by running/stopping a process, upgrading a process to new version.

To open the AkaBot Agent, you need to:

- 1 – Click system tray to show hidden icons.
- 2 – Right click Aka Bot icon.
- 3 – Select Show akaBot Agent.



After that, AkaBot Agent program is displayed on screen as below:



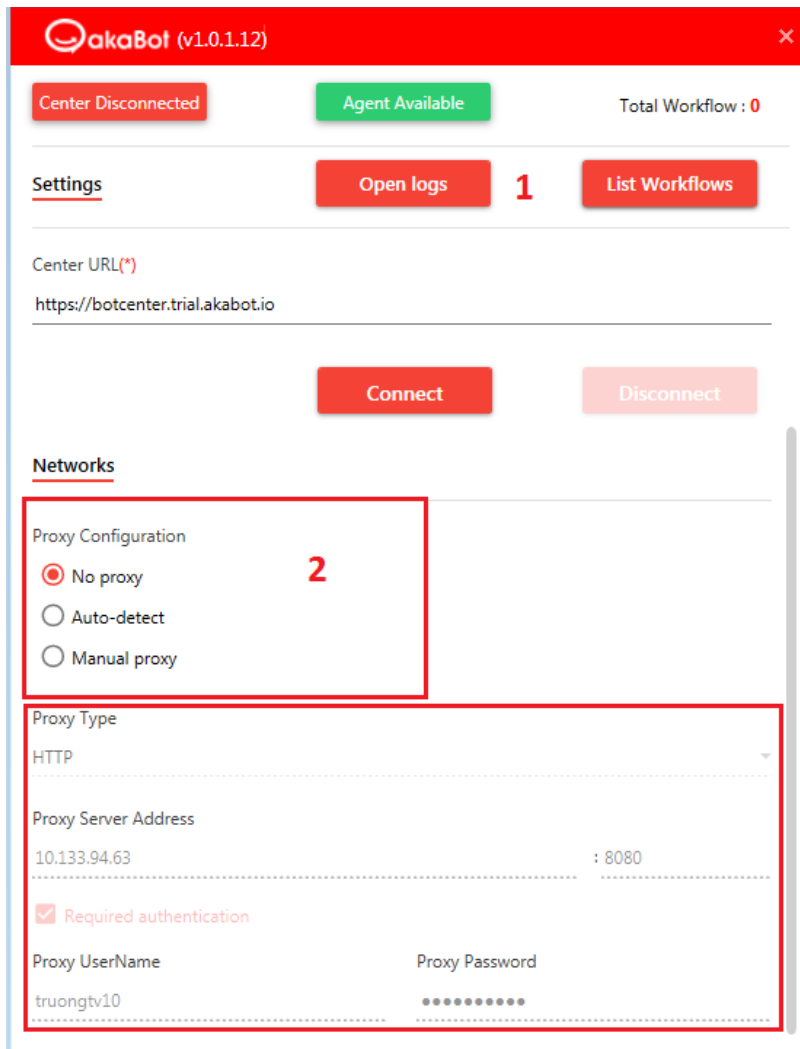
## 2.1. Configure network setting

If your network requires the proxy to get access to the Bot Center, you need to firstly configure the proxy setting to open the connection by performing below steps:

**Step 1:** In Settings screen ( if in the List Workflows screen then select Settings button).

**Step 2:** Select proxy configuration option.

- If select No proxy or Auto detect option, go to step3.
- If select Manual proxy option, you need to specify the proxy setting:
  - Select a proxy type.
  - Fill proxy server URL.
  - Fill proxy port.
  - If the proxy requires the authentication, check option Required Authentication then fill user name, password to authenticate.



## 2.2. Configure bot setting & connect to Bot Center.

To connect the bot to Bot Center, you need to register the bot setting in the Bot Center first to have a Agent Key.

To register the bot to the Bot Center, you may follow the instruction [here](#).

After having the Agent Key, you can perform below actions to connect to the Bot Center.

**Step 1:** – In Settings screen ( if in the List Workflows screen then select Settings button).

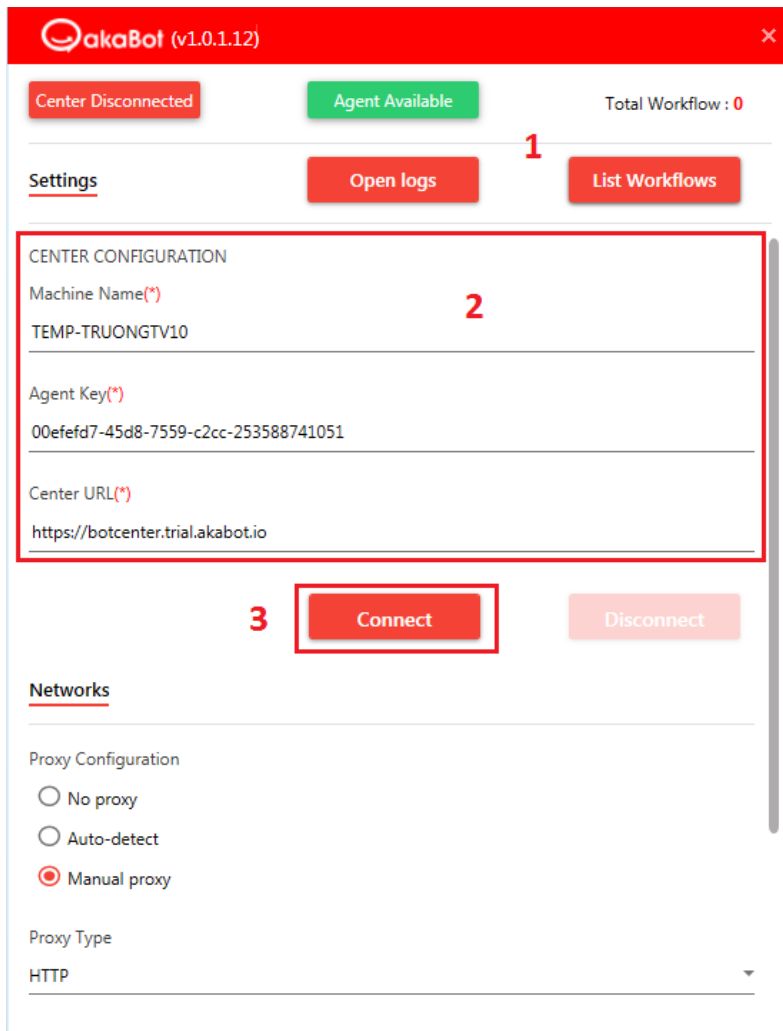
**Step 2:** – Fill information into Central Configuration form.

- **Machine name:** the computer name of current computer. The machine name is automatically pre-populated for you.

- **Agent key:** the key registered to the Bot Center.
- **Center URL:** Bot Center URL.

**Step 3:** – Click Connect to perform the connecting to the Bot Center.

After connecting successfully, status of Aka Center turns to be Connected.



If the bot is already connected to the bot center, you can disconnect at any time by clicking Disconnect button.

### 2.3. Get processes from Bot Center or Bot Studio.

Every 10 seconds, the Bot Agent will automatically be refreshed to get all the process packages published from the Bot Center.

You can refer the link for how to [publish a package from the Bot studio](#).

### 2.4. Control the processes

For a process, you can control by performing below actions:

- Pull a package.
- Start a process
- Stop a process

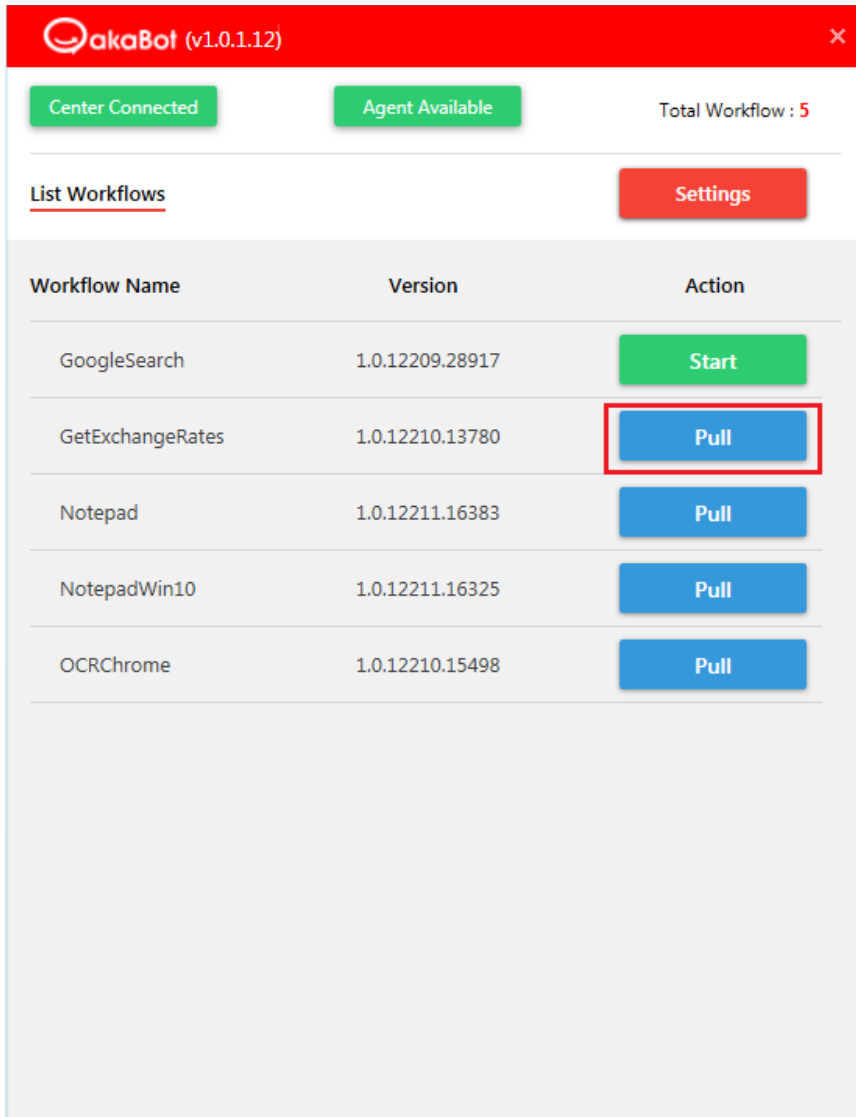
The screenshot displays the akaBot (v1.0.1.12) interface. At the top, there is a red header bar with the akaBot logo and version number. Below the header, there are three status indicators: "Center Connected" (green), "Agent Available" (green), and "Total Workflow : 5" (black). The main content area features a "List Workflows" link and a "Settings" button. Below this is a table with three columns: "Workflow Name", "Version", and "Action". The table lists five workflows: GoogleSearch, GetExchangeRates, Notepad, NotepadWin10, and OCRChrome, each with a "Pull" button in the Action column.

Workflow Name	Version	Action
GoogleSearch	1.0.12209.28917	Pull
GetExchangeRates	1.0.12210.13780	Pull
Notepad	1.0.12211.16383	Pull
NotepadWin10	1.0.12211.16325	Pull
OCRChrome	1.0.12210.15498	Pull

### a. Pull new version of a package

To pull a version of package, you need to click on **Pull** button. The Bot Agent will automatically download the new version of package to the local machine.

After downloading, the changes in new version will be automatically applied in the next running.





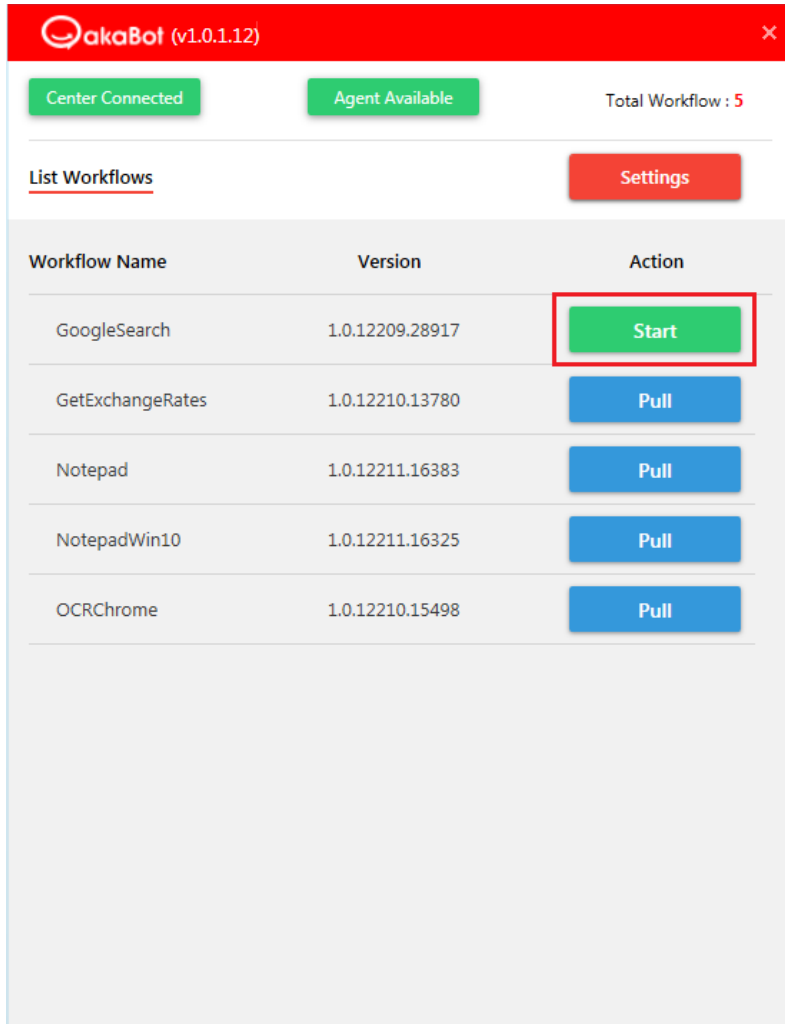
## b. Start a process

You can only start **one process in one moment**.

To start a process, you need to click Start button.

For a new process, you need to full the package to the local machine firstly then start the process.

After clicking **Start** button, the process starts to act as defined in the workflow.

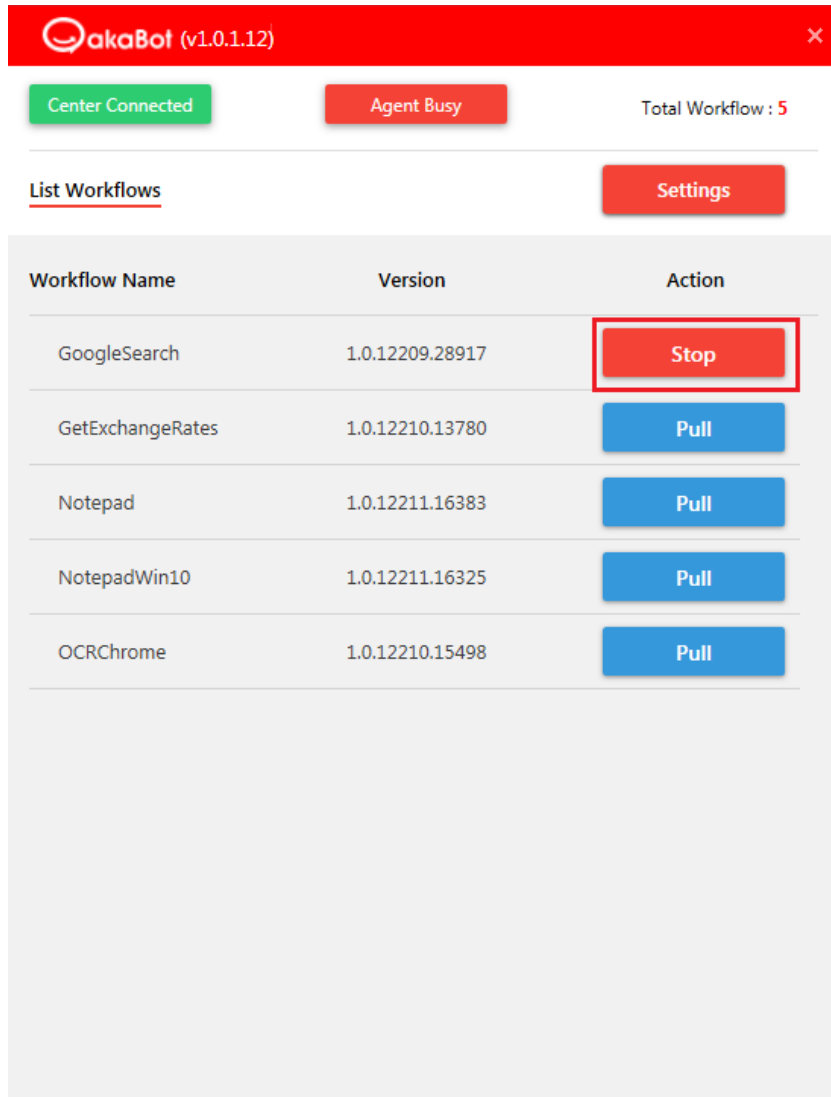


While running, the bot status turns to be Busy.

c. Stop a process

While a process is running, you can stop it manually by clicking Stop button.

After stopped, robot status turns to be Available and all related programs while running will be closed.



The screenshot shows the akaBot (v1.0.1.12) interface. At the top, there is a red header bar with the akaBot logo and version. Below the header, there are three status indicators: 'Center Connected' (green), 'Agent Busy' (red), and 'Total Workflow : 5'. A 'List Workflows' link is underlined, and a 'Settings' button is visible. The main content is a table with three columns: 'Workflow Name', 'Version', and 'Action'. The 'GoogleSearch' workflow has a red 'Stop' button highlighted with a red box. Other workflows like 'GetExchangeRates', 'Notepad', 'NotepadWin10', and 'OCRChrome' have blue 'Pull' buttons.

Workflow Name	Version	Action
GoogleSearch	1.0.12209.28917	Stop
GetExchangeRates	1.0.12210.13780	Pull
Notepad	1.0.12211.16383	Pull
NotepadWin10	1.0.12211.16325	Pull
OCRChrome	1.0.12210.15498	Pull